



Volume 1, Issue 8

December 19, 2006

Written by Stewart Feitel

Eagle Express Newsletter

Don't Wreck The Halls With Bouts Of Folly!

An often overlooked, yet crucial aspect of any large scale relocation is the movers "protection" of the space during move in. As clients have often invested tens of millions of dollars on the build out, furniture and furnishings of their space, it is paramount that their new offices remain pristine throughout all phases of moving.



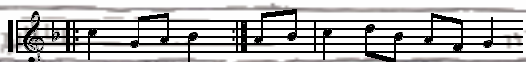
Eagle Transfer assigns a separate crew to manage this task at the client directed

timeframe. Masonite, or tempered floorboards are placed in all carpeted, tiled or marbled floors. Koroflex or "corrugated" is placed on all walls and glass surfaces. Door guards are affixed to all entranceways and interior office openings.

Through this "protection" Eagle Transfer can ensure their clients that when their space is finally occupied, it is in the condition that so many worked so hard to achieve.

On a recent winter night, Eagle Transfer relocated the following:

- 12 Desks with Runners, 11 Loads of Laminate,*
- 10 Ladies Luggage, 9 Partners Packing*
- 8 Marble Mantles, 7 Section Sofas,*
- 6 Gross of Cartons, 5 Racks of Steel,*
- 4 Haulage Bins, 3 Trench Coats,*
- 2 Workman's Gloves*
-And a Partridge In A Pear Tree*



Eagle Transfer Corporation
*would like to wish all of our clients,
 friends, family, and members of our
 Armed Forces here and abroad,
 Best Wishes For*

***a Healthy, Happy and
 Joyous Holiday Season.***